

MODEL:ST-288C

INSTRUCTION BOOK AND PARTS BOOK

SU LEE MACHINE IND.CO.,LTD.

IMPORTANT SAFETY INSTRUCTIONS

When using your cutting machine, basic safety precautions should always be followed, including the following

1. Read all instructions.
2. Use machine only for its intended use a portable cutting machine
3. Turn machine to "OFF" before connecting or disconnecting power cord.
4. Do not install or store this machine in a wet location.
5. Keep area around machine free from the accumulation of lint.
6. Always disconnect machine from electrical connector when not in use, before servicing, and when changing blades
7. Do not operate machine with a damaged cord or if machine has been dropped. Do not disassemble; take to qualified serviceman for repairs. Incorrect reassemble can cause electric shock when the machine is used.
8. Keep visitors away. Do not leave machine unattended while it is connected.
9. Keep hands away from blade.
10. Be sure machine is properly grounded while in use to protect the operator from electrical shock.
11. Keep machine clean and blade sharp for best and safest performance.
12. The knife key and other wrenches must be removed from machine before starting motor.
13. Keep guards in place and in working order.

Save These Instructions

重要安全指導

當你使用斷布機時,必須遵守以下的安全警告指示

1. 閱讀所有的指示說明。
2. 由經訓練的專人使用操作。
3. 接上或取下電源時, 機器開關必須先關閉。
4. 勿將機器安裝或存放於潮濕的地方。
5. 機器周圍地區保持乾淨, 遠離棉, 毛絮堆積。
6. 當機器不使用或保養、維修、更換砂輪、刀片等零件時, 必須先拔下電源。
7. 請勿自行分解拆裝, 應交由合格的技師進行維修, 不正確的拆裝將造成電機的損毀和故障
8. 非操作人員請勿靠近, 操作人員不在時請拔掉電源。
9. 保持注意手離刀片。
10. 確定電源接地。
11. 保持機器清潔和刀片鋒利, 以備最佳使用狀態。
12. 更換刀片務必確定鎖緊並移除相關工具。
13. 安全護蓋裝置使用前必須裝好固定。

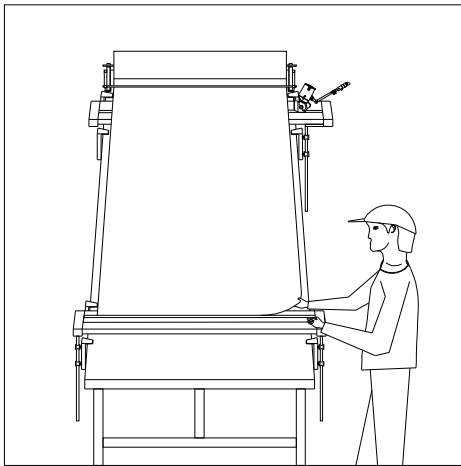
謹記以上說明

INSTRUCTION MANUAL

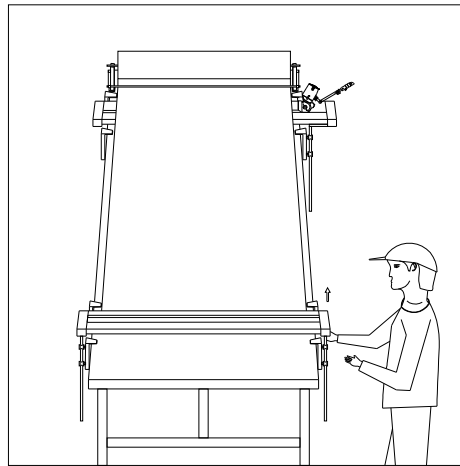
- 1.1 Connect the terminal,grind the knife 2~3times,reset the counter to 0000,counter switch is turn ON.
- 1.2 See pictuer 1-1,pall cloth to end rail.
- 1.3 See pictuer 1-2,Lift rail to press clothe.
- 1.4 See pictuer 1-3,Push button switch on,and pull cutter cut off cloth in a straight line.
- 1.5 See pictuer 1-4,Lift end rail then put down.

操作說明

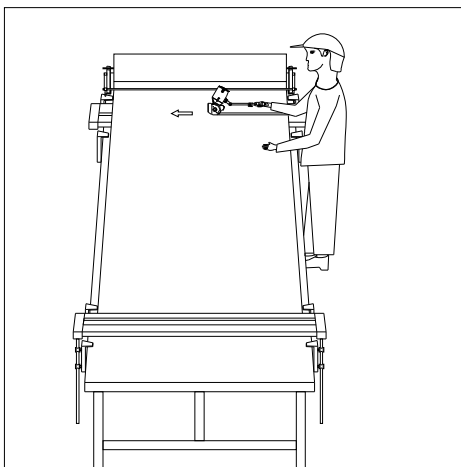
- 1.1 接通電源,磨刀 2~3 次,將計數器歸零,計數器開關置於零 ON.
- 1.2 依圖 1-1 所示,將布拉至尾壓布器.
- 1.3 依圖 1-2 所示,將布壓夾於裁床.
- 1.4 依圖 1-3 所示,按切布開關,起動切刀向前推,將布切斷.
- 1.5 依圖 1-4 所示,抬起軌道,使布料自行落下,並放下軌道,將布料壓固於裁床.



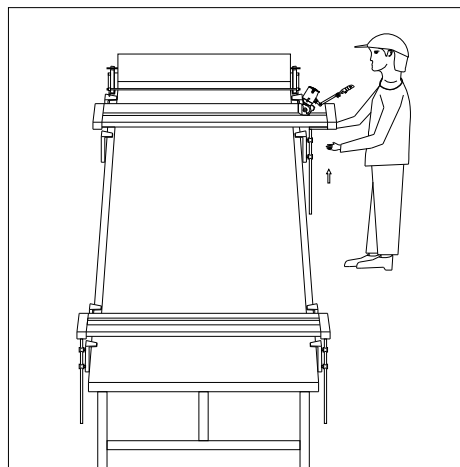
1-1



1-2



1-3



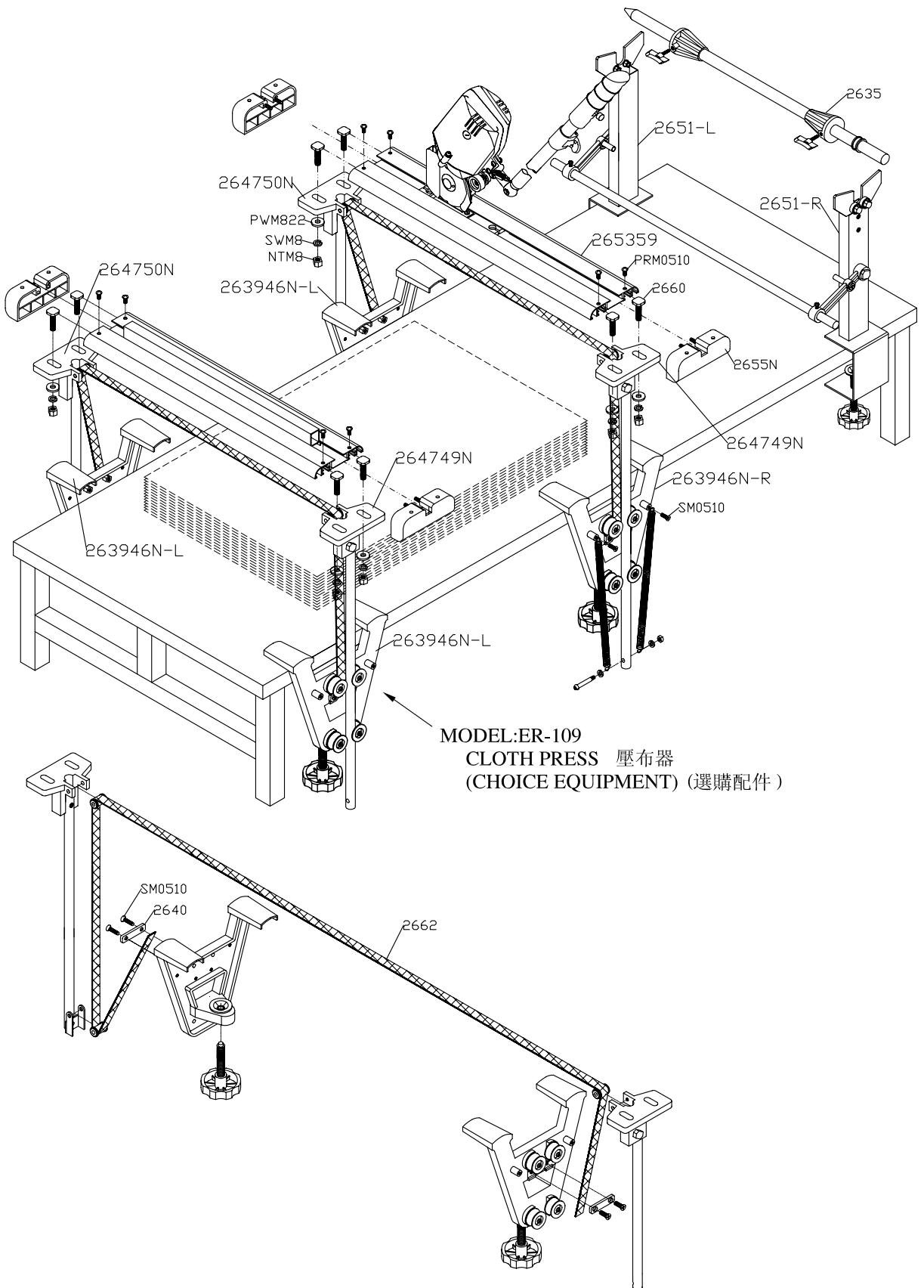
1-4

INSRUCTION AND PROCESS OF INSTALLATION

- 2.1 Align the right foot rest 263946N-R and the left foot rest 263946N-L and secure both on the cutter.
- 2.2 Place the right hoist rod 263946N from top to bottom into the pulley groove of the right rest 263946N-R and the left hoist rod 264750N from top to bottom into the pulley groove of the left rest 263946N-L.
- 2.3 As shown in Fig.2-2, secure one end of the hoist belt 2662 onto the right rest 263946N-R and the other end onto the pulley on top of the left hoist rod 264750N through the pulley 2649 on top of the pulley of pulley set 2650. (Note: the hoist belt must be tightened and the right hoist rod 264749N and the left hoist rod 264750N shall be kept at the same level)
- 2.4 Place the track 265359 at equal distance on top of the right rod 264749N and the left hoist rod 264750N, while securing both using the track securing screw 2660.
- 2.5 Place the left end of the track into the track end lid 2655N and lock it using screw PRM0510.
- 2.6 Place in the fabric-cutting machine ST-288 and drop in some sewing machine oil into the track.
- 2.7 Place the right end of the track into the track lid 2655N and lock it using screw PRM0510.
- 2.8 Hang the lift aid spring 2644-A on the right rest under the right hoist rod 264749N (as shown in Fig.2-1)
- 2.9 Mount the fabric rack 2651 as shown on the cutting bed.
- 2.10 Plug in the power cord 523C1 to finish the process.

安裝說明

- 2.1 將右腳架組 263946N-R 與左腳架組 263946N-L 對齊, 緊固於裁床兩旁。
- 2.2 右升降組 264749N 由上而下放入右腳架組 263946N 之內, 左升降桿組 264750N 由上而下放入左腳架組 263946N-L 之滑槽內。
- 2.3 如圖 2-2 所示, 將升降帶 2662 一端緊固於右腳架組 263946N-R, 另一端經右升降桿組 264749N 上端之滑輪 2649 到對面左升降桿組 264750N 上方之滑輪, 再穿過滑輪組 2650 之滑輪往上, 最後緊固於左腳架組。
(注意: 升降帶必須拉緊, 並使右升降桿組 264749N 與左升降桿組 264750 同等高度)
- 2.4 軌道 265359 等距四置放於右升降桿組 264749N 及左升降桿組 264750N 上方以軌道固定螺絲 2660 固定。
- 2.5 軌道左端置入軌道端蓋 2655N, 用螺絲 PRM0510 鎖上。
- 2.6 放入切布主機 ST-288, 並於軌道內滴入小許針車油潤滑。
- 2.7 軌道右端置入軌道端蓋 2655N, 用螺絲 PRM0510 鎖上。
- 2.8 將右腳架組上之提升輔助彈簧 2644-A 掛於右升降桿組 264749N 之下方 (如圖 2-1 所示)。
- 2.9 撐布架組 2651 依圖於組裝於裁床。
- 2.10 插上電源插頭線 523C1 即可。

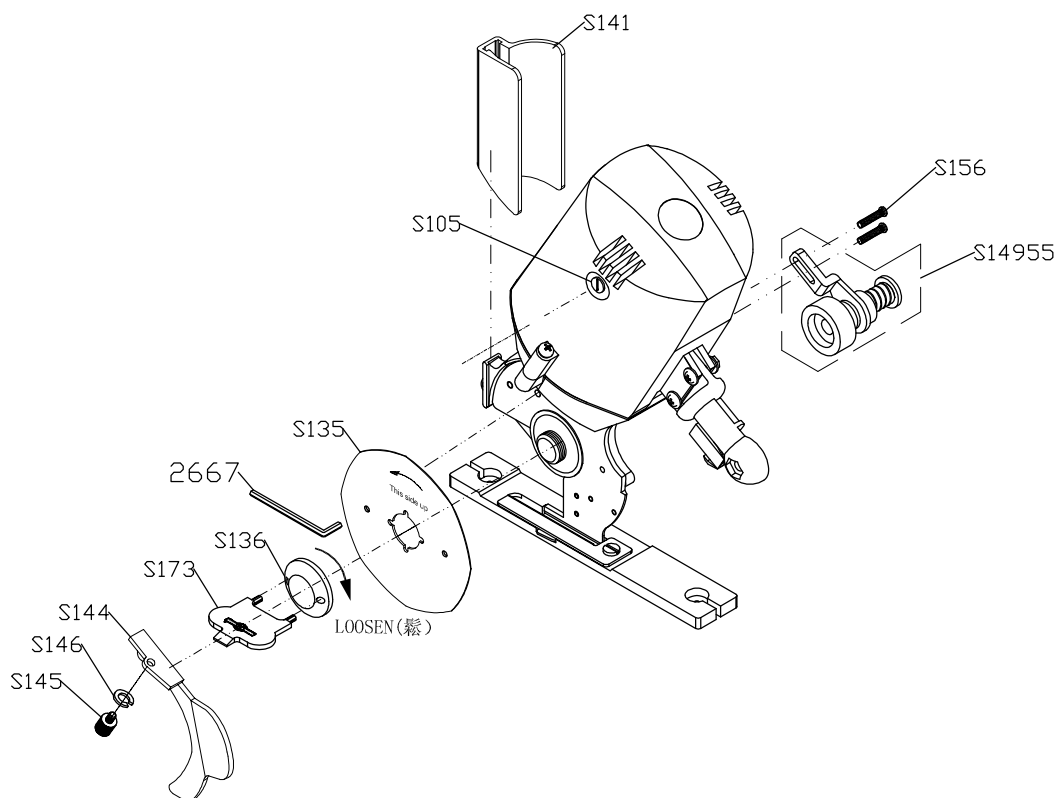


CHECKING (Release connecting plugs)

- 3.1 Every 24 hours, Clean the Rail bar.
- 3.2 Every 200 hours, Give oil to Rail Steel Belt 2657
- 3.3 Adjustment of Re-sharpener:
While the grinding wheel wears ,loosen stop nut of collar holder and rectify the re-sharpener position so as to the grinding wheel keeps proper contact with the knife edge.
- 3.4 Replacement of Grinding wheel,See Grinding wheel Replacement Guide.
- 3.5 Replacement of knife:
 1. Remove the knife guard S141 and knife cover S144.
 2. Lock the knife to the Standard S127,insetting 2.5mm spanner S173 to hole in the knife.
The corresponding hole for locking knife is also provided in the standard ,Remove knife lock hut S136 by turning it left Use the wrench S173 attached.
 3. Remove knife.
 4. Be sure the front face of the knife when re-setting the knife “This side up”markde face is the front face.
 5. Adjust the position of re-sharpener S14955 after each replacement of knife.
- 3.6 Replacement of Carbon Brush
 1. Too much weaving of carbon brush will cause motor troubles. Carbon brush must be replaced when it wears to 5-6mm.
 2. Carbon brush cap S105 is replaced by turning it left by attached wrench.
 3. Always replace right and lift carbon brushes simultaneously.
 4. Be sure to hold metallic part of the brush , keep fingers away from carbon.

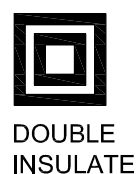
保養與檢修（注意:將插頭拔掉）

- 3.1 每使用 24 小時,清理軌道內部之棉布絮.
- 3.2 每使用 200 小時,請于軌道鋼片 2657 處加少許潤滑油.
- 3.3 磨刀石的調整:
當刀片磨損時,將磨刀石螺絲放鬆,調整磨刀石位置,使砂輪與刀片的邊緣保持正確的接觸面,在將螺絲旋緊即可.
- 3.4 砂輪的更換請看圖解所示.
- 3.5 刀片的更換:
 - 1.將前護片 S141 及刀片護蓋 S144 取下.
 - 2.使用內六角扳手 2667 插入刀片空內,使刀片卡鎖在馬達座 S127 上,不會轉動,再使用鎖刀 S173 將鎖刀螺帽 S136 依反時針方向轉開.
 - 3.取下刀片.
 - 4.裝刀片時請確定刀片上印有“**This side up**”字樣的一面,即正面朝向外面,人可看到.
 - 5.每次更換刀片後,須將磨刀石 S14955 重新調整至適當位置.
- 3.6 碳刷的更換:
 - 1.碳刷磨損太多時,可能損壞馬達,當碳刷磨損到長度剩下 5~6MM 即可更換.
 - 2.只須將碳刷蓋 S105 轉開即可取出舊碳刷,再將新碳刷置入,將碳刷蓋旋上即可.
 - 3.通常更換碳刷時,請將左右兩個同時更換.
 - 4.裝入時,請確認碳刷有接觸在金屬整流子上用手碰碳刷.



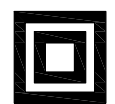
SPECIFICATIONS:

Knife Size	:108mm(4 ¼inches)
Knife Shape	:Octagon/Round
Cutting Capacity	:25mm
Voltage	:Single Phase 100V~110V or 220V~240V
Cycle	:50~60Hz
Power	:150W



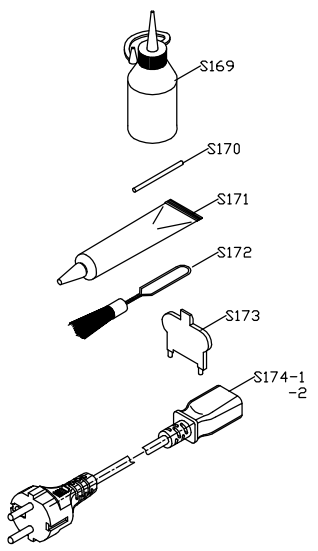
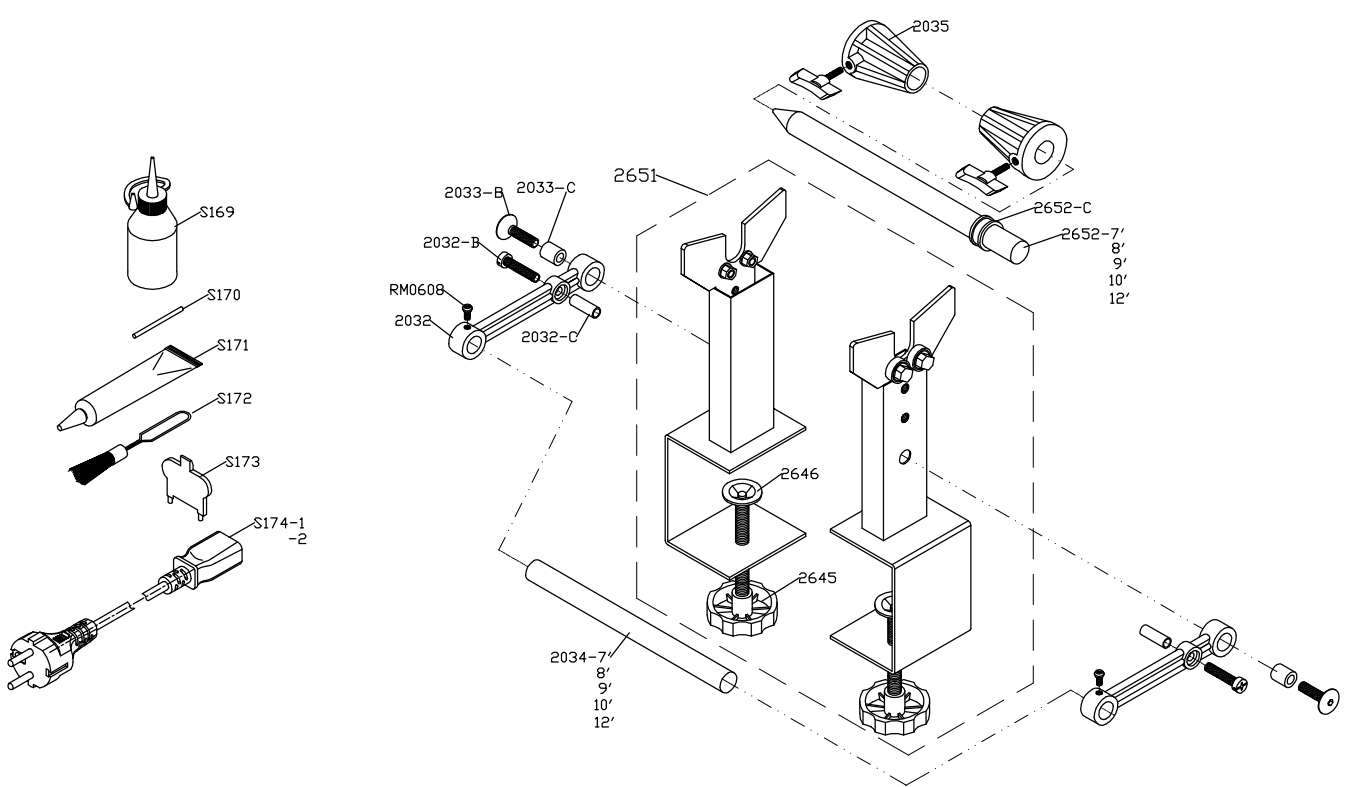
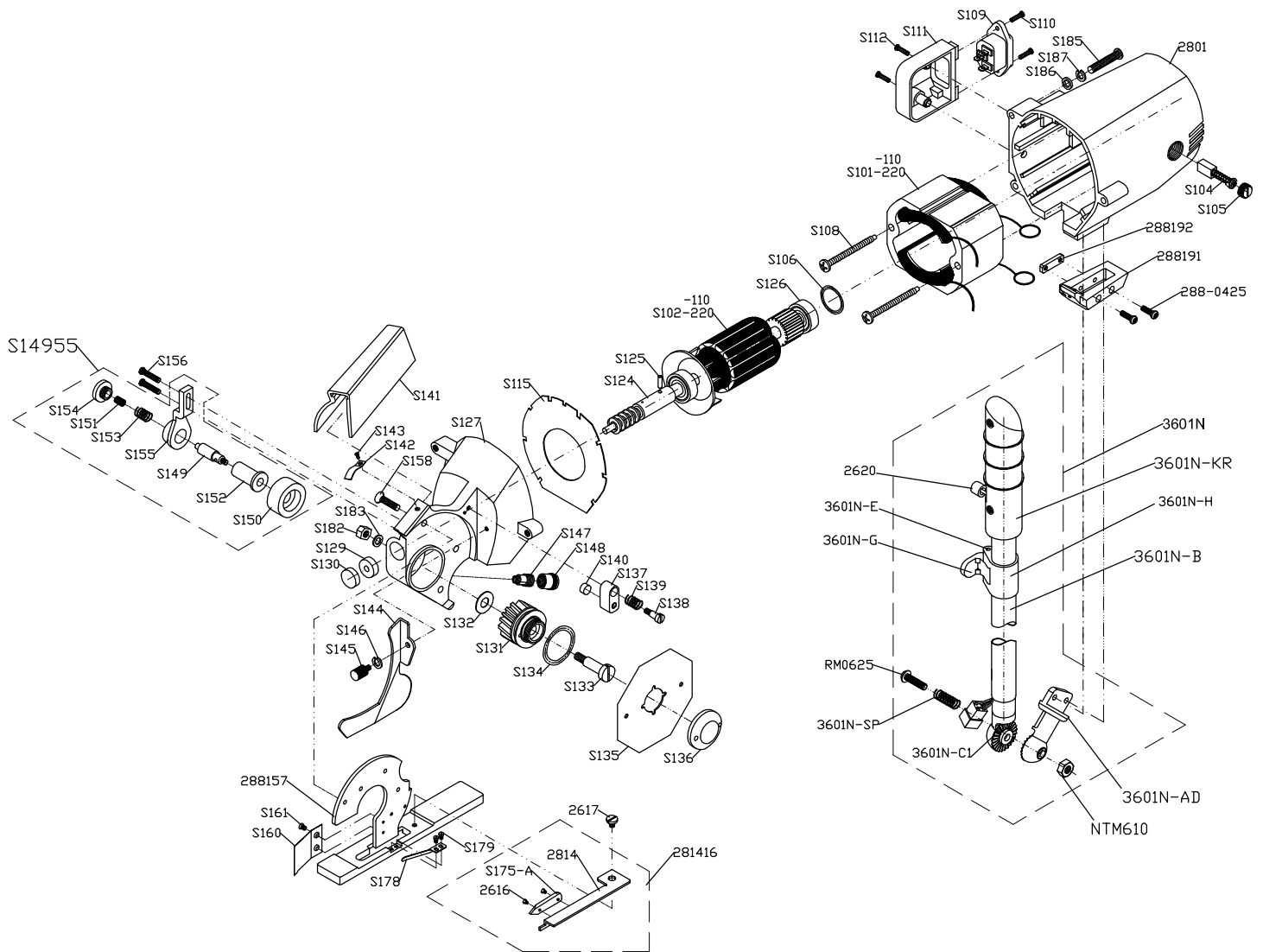
DOUBLE
INSULATE

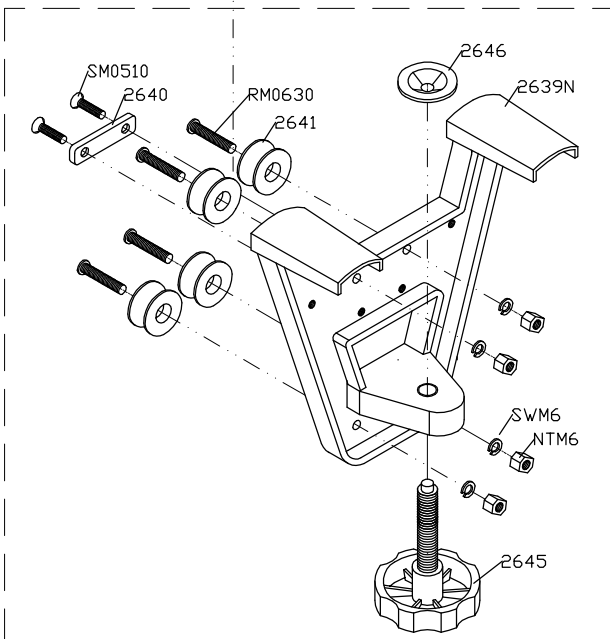
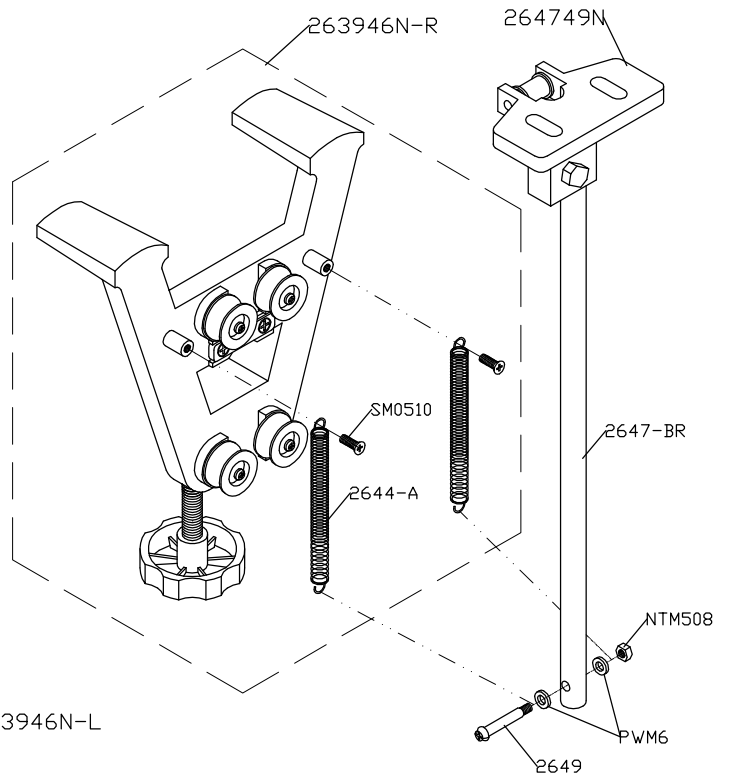
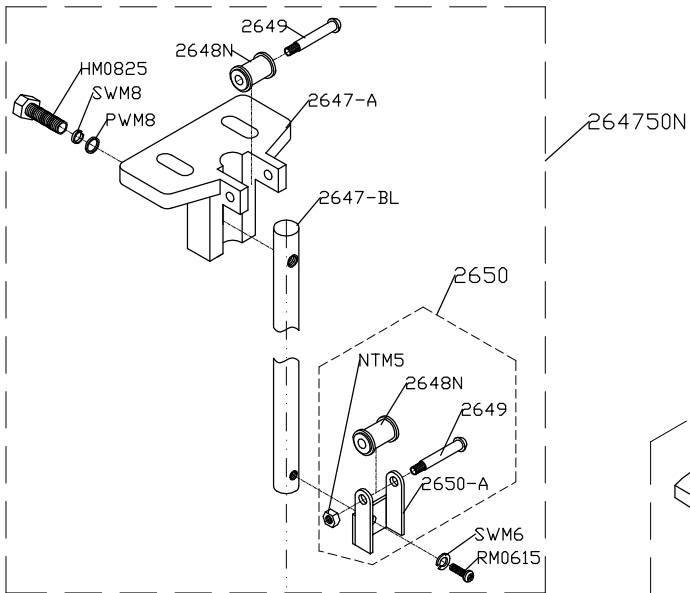
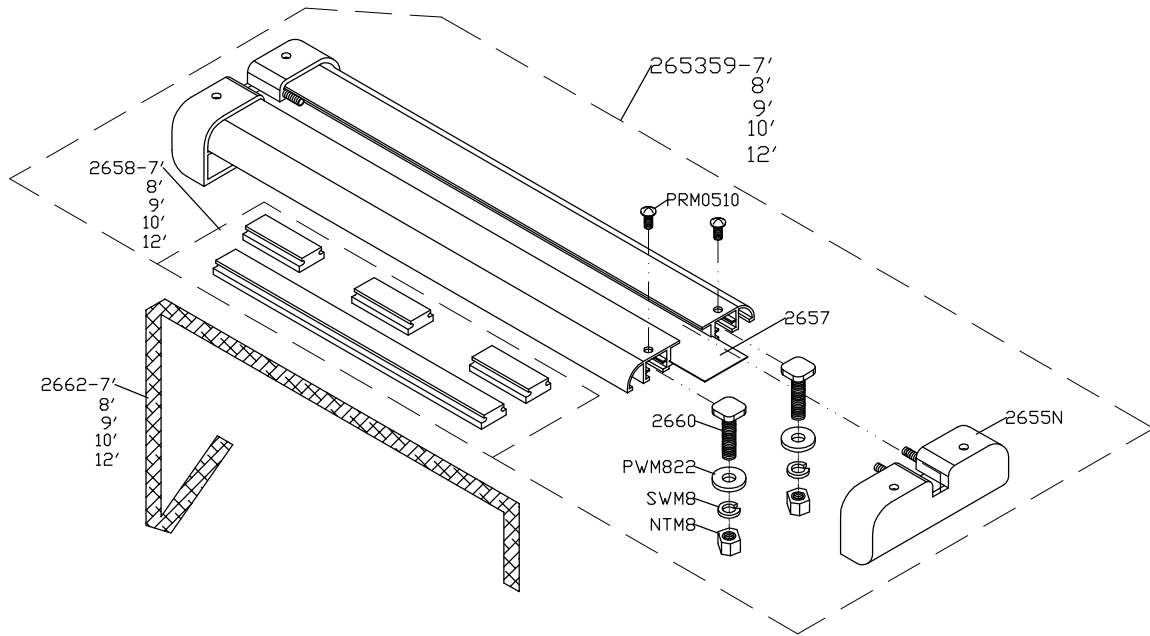
規格:	
刀片尺寸	:108mm(4 ¼英吋)
刀片形狀	:八角刀/圓刀
裁斷能力	:25mm
電 壓	:單相 100V~110V 或 220V~240V
頻 率	:50~60Hz
輸出功率	:150W



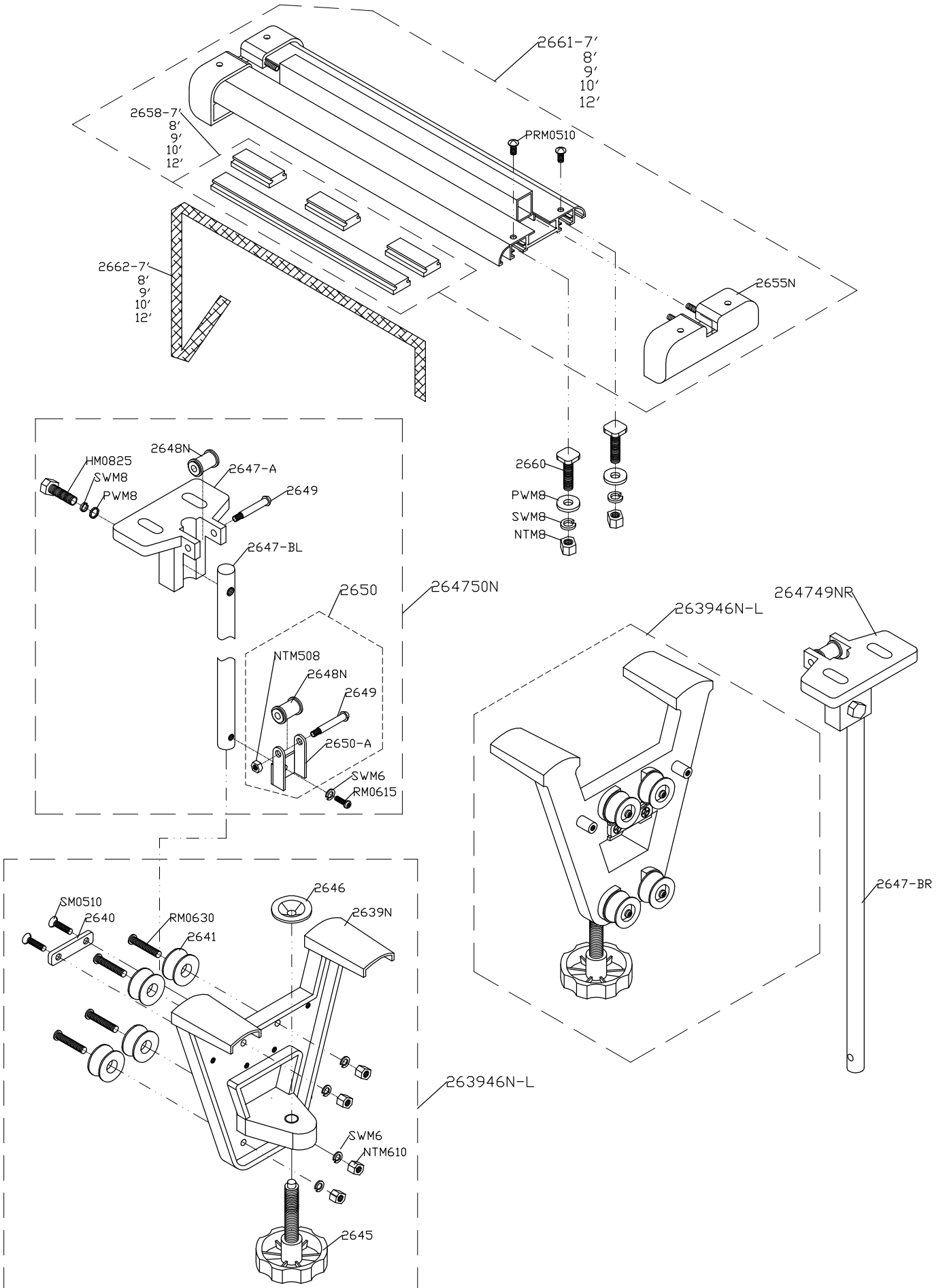
雙重絕緣

* 生產者保留變更規格不另行通知之權利 *





FOR ST-260C & ST-360C & ST-288C MODEL:ER-109



PART NO.	PART NAME	零件名稱	PART NO.	PART NAME	零件名稱
S101-110	110V Stator	110V定子組	2033-B	Rocker stop screw	搖桿臂固定螺絲
-220	220V Stator	220V定子組	2033-C	Rocker stop screw cover	搖桿臂固定螺絲套管
S102-110	110V Rotor	110V轉子組	2034-7'	7feet Rocker Bar	7呎搖桿棍
-220	220V Rotor	220V轉子組	-8'	8feet Rocker Bar	8呎搖桿棍
S104	Carbon Brush	碳刷	-9'	9feet Rocker Bar	9呎搖桿棍
S105	Cap for Carbon Brush	碳刷蓋	-10'	10feet Rocker Bar	10呎搖桿棍
S106	Wave Washer	波形彈簧華司	2035	Cloth Fixture	布卷固定器
S107	Motor Cover	馬達殼	2616	Screw for Lower Blade	底刀螺絲
S108	Screw for Stator	定子固定螺絲	2617	Screw for Lower Blade Set	底刀組螺絲
S109	Terminal	插座	263946N-L	Left Clamp Set	新左腳架組
S110	Screw for Terminal	插座螺釘	263946N-R	Right Clamp Set	新右腳架組
S111	Terminal Box	插座盒	2639N	A Clamp	A型腳架
S112	Screw for T.Box	插座盒螺釘	2640	Lift Belt Catch	升降帶固定片
S115	Air Guide	空氣導流片	2641	Bar lifter Roller	藍輪
S117	Screw for Handle	手把螺絲	2644-A	Spring for Lift	提升輔助彈簧
S118	Nut for Handle	手把螺母	2645	Big Screw	轉螺絲
S124	Drive Gear	蝸桿	2646	Washer for Big Screw	碗型華司
S125	Roll Pin	彈簧銷	264749N	Right Bar Lifter	新右升降桿組
S126	Bearing	軸承	264750N	Left Bar Lifter	新左升降桿組
S127	Grar Box	齒輪箱	2647-A	Bar Lifter Plate	升降桿座
S129	Drive Gear Metal	蝸桿金屬圈	2647-BL	Left Bar	左升降桿
S130	Cover for Metal	金屬圈蓋	2647-BR	Right Bar	右升降桿
S131	Knife Gear	刀片齒輪	2648N	Roller for Lift Belt	升降帶滑輪
S132	Washer for Gear	齒輪墊圈	2649	Roller Shaft	滑輪軸
S133	Screw for Gear	齒輪螺絲	2650	Roller Set	滑輪組
S134	Ring for Gear	齒輪油封	2651	Sustaining Frame Unit	撐布支架
S135	Knife(8-sided)	八角刀片	2652-7'	7feet Sustaining Bar	7呎撐布棍
S136	Lock Nut for Knife	刀片螺母	-8'	8feet Sustaining Bar	8呎撐布棍
S137	Knife Oiler	刀片加油器	-9'	9feet Sustaining Bar	9呎撐布棍
S138	Screw for Oiler	加油器螺絲	-10'	10feet Sustaining Bar	10呎撐布棍
S139	Spring for Oiler	刀片加彈簧	-12'	12feet Sustaining Bar	12呎撐布棍
S140	Oil Felt	油氈	2652-C	Sustaining Bar Ring	撐布棍定位環
S141	Knife Guard	前護片	265359-7'	7feet Rail Set	7呎軌道組
S142	Spring for Guard	彈簧片	-8'	8feet Rail Set	8呎軌道組
S143	Screw for Spring	彈簧片螺絲	-9'	9feet Rail Set	9呎軌道組
S144	Safety Plate	側護片	-10'	10feet Rail Set	10呎軌道組
S145	Screw for Plate	側護片螺絲	2655N	Rail Guard	軌道護蓋
S146	Spring Washer for Plate	側護片華司	2655N-B	Spring	防撞彈簧
S147	Grease Cup	黃油杯	2657	Rail Steel Belt	軌道鋼帶
S148	Cap for Grease Cup	黃油杯蓋	2658	Rail Rubber belt	軌道膠條
S14955	Grinder Set	磨刀石組	2660	Screw for Rail	軌道固定螺絲
S149	Grinder Shaft	磨刀石軸	2662	Lifter Belt	升降帶
S150	Emery Wheel	砂輪	2667	2.5mm Spanner	2.5mm 內六角扳手
S151	Grinder Spring	磨石彈簧	2814	Lower Blade Arm	底刀架
S152	Grinder Collar	磨石套管	281416	Lower Blade Set	底刀組
S153	Spring for Collar	套管彈簧	288191	Guard ring	護圈
S154	Sharpening Switch	研磨按鈕	288192	Nut for Guard ring	護圈螺母
S155	Grinder Arm	磨刀石架	288-0425	Screw M4x25 Round Cap	M4×25圓頭螺釘
S156	Screw for Grinder Arm	磨刀石組螺絲	HM0825	Screw M8x25 Nut Cap	M8×25六角螺絲
288157	Standard	基座	NTM508	NUT M5-0.8 Hex	M5六角螺母
S160	Guide Plate	導引片	NTM610	NUT M6-1.0Hex	M6六角螺母
S161	Screw for Guide Plate	導引片螺絲	NTMC6	NUT M6 Hex	M6防鬆六角螺母
S169	Oiler	油壺	NTM8	NUT M8	M8六角螺母
S170	Lock Shaft	銷心	PRM0510	Screw M5x10 Plate Round Cap	M5×10扁圓頭螺絲
S171	Grease	黃油	PWM6	Washer 6.4x11.5	M6平華司
S172	Cleaning Brush	清潔刷	PWM8	Washer 8.4x15.5	M8平華司
S173	Wrench	扳手	RM0608	Screw M6x08 Round Cap	M6×8圓頭螺絲
S174	Code Complete with earth	電源線	RM0615	Screw M6x15 Round Cap	M6×15圓頭螺絲
S175-A	Lower Blade	下刀	RM0625	Screw M6x25 Round Cap	M6×25圓頭螺絲
S178	Pressure Spring for Lower Blade	下刀彈簧	RM0630	Screw M6x30 Round Cap	M6×30圓頭螺絲
S179	Screw for Pressure Spring	下刀彈簧螺絲	SM0510	Screw M5x10 Flat Cap	M5×10沉頭螺絲
S182	Nut for Knife Gear Screw	S133之螺母	SWM6	M6 Spring Washer	M6彈華司
S183	Washer for Knife Gear Screw	S133之華司	SWM8	M8 Spring Washer	M8彈華司
S185	Screw for Motor	馬達螺絲	2661-7'	7feet Cloth Hold Bar	7呎壓布軌道組
S186	Spring Washer for Motor	馬達彈華司	3601N	Long Handle	長手把組
S187	Washer for Motor	馬達平華司	3601N-AD	Front Arm	(長把)短前段
2032	Rocker	搖臂	3601N-SP	Spring	轉軸彈簧
2032-B	Screw for Rocker	搖臂螺絲			
2032-C	Screw Cap	搖臂螺絲套			



速利機械工業有限公司

SU LEE MACHINE IND.CO.,LTD.

地址： 臺灣省臺北市北投區磺港路 190 號

NO.190,HWANG GANG RD.,BEITOU,TAIBEI,TAIWAN.

TEL: (886 2)28914693 28927700

FAX: (886 2)28940855

E-mail: sulee1@ms11.hinet.net

Http: www.sule.com.tw